

ROGI News

ROGI meetings are held on the 2nd Thursday night of the month, with doors opening at 6.15pm. Members can visit the plant table, Seed Bank, library and stalls, or have a chat and something to eat before the meeting. Please be seated by 7pm ready for the proceedings.

Bayside Community Church
1-9 Macarthur Street
ALEXANDRA HILLS

Don't forget:

- A small plate of finger food to share for supper (hot/cold)
- Your keep cup for a cuppa
- Return washed seedling pots
- Bring a basket/box/bag for your purchases
- Any questions for Plant Clinic
- A plant for ROGI Rewards
- Free swap/share/giveaway

Inside this edition

| | Page |
|-----------------------------------|-------|
| President's Report | 2 |
| July Meeting. ROGI Events | 3 |
| How to Achieve Healthy Soil | 4-5 |
| Garden Visit - Helen Boreham | 6-7 |
| Germination: How Long? | 8-9 |
| Indigiscapes June Fair | 9 |
| ROGI Committee Positions | 10-11 |
| Why Be a Volunteer? | 11 |
| Cleveland Property For Sale | 12 |
| Upcoming Events | 12 |
| ROGI Committee and Office Bearers | 13 |
| Newsletter Deadline | 13 |

ROGI webpage: www.rogi.com.au
ROGI Email: info@rogi.com.au



Photo by Kathy Petrik

Gardening Australia's Costa Georgiadis at the June Indigiscapes Environment and Community Fair with ROGI members Helen Clatworthy and Toni Bowler.

Terry's Tips

The cooler season is upon us, and you might be dealing with an abundance of passionfruit if you have a vine or two around. Mine has covered the five fruit trees in my front yard, but that's okay with me. Another thing I've noticed is that my *Chinese Keys* ginger is dying back, so time to start harvesting and enjoying these little beauties. A lot of plants will be responding similarly at this time of year, so think twice before trying more water/fertiliser.

It's also the time of year that we thank the current committee of volunteers for their great work in keeping the ROGI boat afloat. Some unusual changes happened this year with swapping of the presidency half way through, but as I've said before, the club is fortunate to be in the situation where we have a number of members who know the ropes and can lend a hand. Thanks in particular to Ann, Rhonda and Toni for stepping up in searching for speakers for our meetings. Thanks also to volunteers Treasurer Bernadette, Secretary Patsie, and our long-serving Membership Officer and greetress, Rhonda. Also to our outgoing librarian, Viga, and incoming librarian Rose, who filled the role before I even had the chance to ask for volunteers! A shout out to Bevan and Romana for running the AV desk, and also to the seedsters - Linda, John, Geoff, Cheryl and Erin. Thanks to Gaby for handling the supper, and also to anyone else who put up their hand to run a ROGI shop or stall, or just lent a hand when the time came. That's the vibe that keeps the Club alive!

It's now time to think about the next committee for the August AGM. With such great supporters around, there will surely be someone who can help fill a role on the new committee. We have role descriptions which provide a road map for each role, and I'd encourage first timers to have a go to give the regulars a break. You'll find some brief descriptions of what's involved on

pages 10-11 of this newsletter. Please ask a committee member if you'd like more information about their role.

In the 15 years it's been running ROGI has made a name for itself within the Redlands, and I'm proud to be a member of it. We're known in Brisbane gardening circles as a club which delivers on commitments, and is a great source of gardening tips 'n' tricks to help new and old hands alike. If you're ready to take your gardening to the next level, get on board!!

With the committee turning our focus to the AGM, the Constitution and the OFT (Office of Fair Trading) are the first ports of call when it comes to proceedings. Our Treasurer Bernadette, and Secretary Patsie, were on the ball and noticed that as a small association, the only reason for an annual financial audit is written in our Constitution.

Auditing is a process which costs time and money. Every month the Treasurer is required to produce a financial report to the committee including income, expenses and balance sheet. I'm happy to say that Bernadette has done so flawlessly. Please join me in thanking her for her help here. Each financial report is voted, accepted, and archived. The full annual report will be presented to members at the AGM. An audit would achieve little in terms of transparency, the club has high transparency in this regard.

At the next members meeting in July, I'll open the floor to discuss and vote on the proposed change which was emailed to you on the 13th June by our Secretary Patsie. Thanks to those who have already replied. Your contributions are appreciated. I look forward to the meeting.

Warm regards,
Terry Sullavan, ROGI President

July Meeting

Tips from a Commercial Citrus Grower



Our guest speaker for the July meeting is Jenny Iriondo from Cedar Creek Nursery on the Sunshine Coast. Established in 1989, this specialist wholesale nursery was at one time the largest citrus propagating operation in Queensland. It is now a major supplier of citrus trees to Bunnings and leading citrus growers in areas such as Gayndah, Mundubbera and Emerald.

Bring along your citrus growing questions, as Jenny is an expert in this field. She will share with us her tips on how to grow citrus productively and organically.

We'll also hear from a ROGI member about what is happening in their garden. Bring along your questions for Plant Clinic and we'll see if someone can help.

The usual attractions will be there - Seed Bank, the well-stocked library, some seedlings and plants, plus local honey, home-made jam, wax wraps and more.

**All ROGI Members \$2-00 entry
Visitors \$5-00 entry
Free tea and coffee**

Supper will be held at the beginning of the night (6.30pm). It would be appreciated if all attending could contribute by bringing a small plate of finger food to share (hot or cold). The meeting starts at 7pm.

ROGI Events

SEED SAVERS GROUP *

Wednesday 17 July - 7pm to 8.30pm

It's winter, so we'll be exploring the joys of brassicas. They grow so well in the cool.

What are they? How do we save their seeds?

How do we keep the seeds true to their parents for our next sowing? Which brassicas are likely to cross pollinate?

Can we grow brassicas for warmer seasons?

We'll also be growing and saving seed for ROGI and sharing seedy companionship. Welcome to all members, but we have limited spaces so book early.

Please bring:

A cup for a drink.

Any seeds you'd like to separate and share.

A tray or box to take home seed punnets for growing on.

A small plate of food to share (fruit is good).

If you've booked and can't come, please take your name off the list so someone else can come in your place.

GARDEN VISIT - Rhonda Binns, Cleveland

Sunday 28 July - 2pm

The garden of one of ROGI's founding members promises to be one not to be missed. You'll see mature fruit and citrus trees, bananas, raised garden beds with a variety of alliums (leeks, golden shallots, garlic, spring onions), beetroot, kale, kohlrabi, asparagus, peas, sub-tropical spinaches, herbs, bees, and more.

Please email Toni at tonibowler@hotmail.com or phone her on 0402 323 704 to book your spot. There will also be a sign-on sheet at the July meeting.

*** PLEASE BOOK ON TEAMAPP**

How to Achieve Healthy Soil

Our guest speaker for June, Kat Pearson, recently made the career leap from engineering to horticulture, and loves it! She has always had a passion for gardening and plants. After buying a property in Wynnum six years ago, Kat and her husband have been steadily turning the boring grassy block into a garden full of flowers and food. In her talk, Kat shared with us how to achieve healthy soil and healthy plants, so that we have more time for the fun stuff!

Dirt vs soil

Dirt is dead. It's made up of minerals, rocky bits and dust. Soil is full of life. It has structure, organics, holds nutrients, bacteria, fungi, tiny little living creatures. As gardeners we want soil. Rather than buying 'soil' (most of which is rubbish, basically dirt mixed with composted pine bark), use what you've got to build living soil. Add organics - compost, aged manures, and mulch.

Soil Types

Sandy: Well drained, doesn't hold nutrients

Loam: Goldilocks

Clay: Full of nutrients and nutrient holding capacity; prone to waterlogging

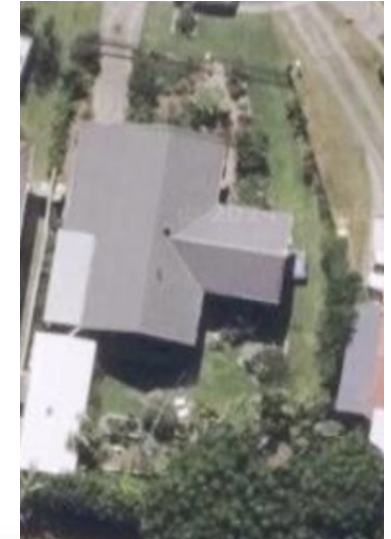
Take a handful of damp soil and squish it. If it doesn't hold a ball, but falls apart, guess what, it's sand. If it forms a ball and then you can roll it into a worm – it's clay! If it forms a ball but falls apart if you try to sausage it, it's loam.

Loam is the 'holy grail', but they all have their benefits and can all be improved by the addition of organics. Organics build up the nutrient-holding capacity of sand, and help break down heavy clay particles that are stuck together.

If you have clay you can add gypsum, which changes the structure of the soil, adding calcium and making the salts more soluble so they wash away. It takes time, and it doesn't work on all clay types. The best method is to work with what you've got, and to grow plants that suit your soil.



Left: Kat's property when she bought 6 years ago



Right: Now

Below: Lots of flowers and food



Garden Visit - Helen Boreham, Cleveland

Report and photos by Ann Roffey

Helen bought her suburban block in Cleveland in May 2015. It was obvious it had never been owned by a gardener. There were only trees around the perimeter, dead grass, a few lillypillies, and a Pride of India. Being new to the area, Helen joined two garden clubs so she could get advice and cuttings. She propagated a lot of the plants that are now in her garden. She also had a cat pen installed by Happy Cat Enclosures for her rescue kittens. She loves wildlife, and doesn't want her cats to endanger them.

Amongst her edible plants are an already fruiting mulberry (in a pot), a lychee tree, ginger, and recently planted pawpaw and Anna apples. Shade is an issue out the back, but not so in the front garden where her bananas, lemonade citrus, pink finger lime, native cumquat, turmeric and a mango tree grow. Now that she is a member of ROGI, Helen hopes to learn more about growing edibles, and she looks forward to exchanging cuttings with other members. Thank you for sharing your lovely garden with us Helen.



The lychee tree is infected with Erinose mites. Helen doesn't use pesticides, but trusts in the many predatory insects to munch on the mites. The infection has come and gone over the years, but the tree keeps thriving.



Frog hotel made from a pot and PVC pipe.



Every inch of space is utilised for plants.



Garden Visit - Helen Boreham, Cleveland (cont'd)



Rose Mr Lincoln



Callistemon
Pink Champagne



Euphorbia Snowflake



Wicking bed that has been used for growing ginger



Cranberry hibiscus



Helen's banana trees are the descendants of a sucker given to her father in the early 1970s. He was good friends with two of the agricultural scientists at what is now known as the Bundaberg Research Facility (part of the Qld Dept. of Agriculture and Fisheries), situated at Kalkie, near Bundaberg, where Helen grew up. At the time there was a practice of giving local home gardeners a special licence to grow plants which were bred at the research facility, in order to see whether they would be viable to grow commercially.

As far as her research has been able to determine, without having tissue cultures analysed, the closest bananas to the ones she is currently growing are the Thai NAM WA bananas.



The bananas from Helen's tree are quite small in comparison to regular bananas. The taste is also different, with a crisp, lemon flavour.

Germination! How long do you have to wait?

By Linda Brennan, Ecobotanica

Germination is when a plant begins to grow from a seed or [spore](#) after a period of [dormancy](#).

When planting seed I want to know about how long it will take before the seed germinates. I'm an impatient gardener who wants to see results immediately. However, seeds have their own timeline, and this time between sowing and germination differs for many reasons.

How long will it be before I see a shoot?

If you like results quickly, plant radish. I've had leaves appearing in just 3 days after sowing in the ground. Radish is well known for its speedy germination rate. Celery seed will take its time and germinate about 14 days after sowing. Beans are quite quick and will be up and about in 5-7 days. Tomatoes can be growing in a week or so too. Brassicas, including cauliflower, broccoli and Asian greens like Pak choy will be showing their first leaves about 7-10 days after sowing.



Coriander germinating seedlings

Can we hurry germination along?

In cooler climates during cool spring weather, gardeners will sow certain seed in trays and set the trays upon special heating mats. This is a bid to speed up germination which may be inhibited if the soil is very cold or frozen. In Qld, we don't need this heating as our soils and climate are mild in winter.

However, many seeds like lettuce, beetroot, kohlrabi, cauliflower, English spinach and peas may not germinate at all if the soil is too warm. I sometimes find this in autumn, as TV show hosts recommend sowing seed of plants that grow in cool weather while we are still in the grip of hot days.



Wheat sprouting

Conversely, summer and heat-loving plants may not germinate until the soil and daytime temperatures rise. Winged beans are a perfect example of this. Turmeric and ginger will also not produce a shoot from their roots until the soil is warm enough either.

Soaking seed is an option for speeding things up a bit. Soaked seed absorbs water more readily through the tiny hole called the hilum. The moisture flushes out the germination inhibitors including abscisic acid and auxins from the seed.

More tips for hurrying up your seeds...

Some seeds like soybeans have very hard seed coats. Scarifying with a nail file or fine sandpaper helps to hurry along the absorption of water.

For lettuce, sowing on top of the soil allows light access, which the plant needs for germination. Parsley and celery will germinate much quicker if they've been soaked in hand-hot water overnight before sowing. Ordinarily they take two weeks to germinate. I've found that an initial water at sowing time with fulvic acid solution or seaweed solution will also speed up germination, by 1-2 days. *Fulvic acid is available through me or via Nutri Tech Solutions in Yandina.*

Germination! How long do you have to wait? *(continued)*

For further reference, online resources like Green Harvest and Eden Seeds have details on germination times for many of their seeds. Green Harvest has now closed, so enjoy the website while you can!

Happy growing, and I hope to see you at the next Seed Saver's meetup on Wednesday 17 July at 7pm. Cheers, *Linda*

Indigiscapes Environment & Community Fair

Photos by Kathy Petrik,
Toni Bowler, Jill Nixon



Well, what a day was had on Saturday 1st June. A huge thank you to all who turned up, helped set up, sell raffle tickets, seeds and plants, plant up, talk up or pack up. You're all stars, and I hope you enjoyed the day as much as I did. It's wonderful being part of what I reckon is the best ongoing fair in the Redlands.

ROGI received a thanks from Margi at Indigiscapes for being there and presenting so well at the stall. Our club has a long connection to this special festival.

Thanks to our efforts, the group also took \$1117, a nice shot in the arm for the club's finances. So, thanks heaps again for dropping in to say hi and help out. It certainly helps bring out the best for the club, showing both the public and each other what we do.

Terry Sullivan, ROGI President

ROGI Committee Positions

The ROGI Annual General Meeting will be held on Thursday 8th August, 2024. All committee positions will be declared vacant at the beginning of the AGM.

PRESIDENT

- Leads and inspires ROGI
- Delivers monthly meetings to members
- Seeks guest speakers, field trips and other opportunities
- Promotes ROGI and organic gardening to the community
- Reviews and distributes the monthly newsletters to membership

VICE PRESIDENT

- Assists the president in planning and delivery of meetings, initiatives and events as above
- Represents president if absent
- Reviews and distributes monthly newsletters to membership if president is unable to do so

SECRETARY

- Keeps records of the business of ROGI, including the rules
- Records office-holders and trustees of the association
- Sets agendas and records minutes of committee meetings
- Completes and sends documents to the Office of Fair Trading after the AGM
- Manages correspondence

TREASURER

- Handles all monies paid or received and issues receipts
- Deposits monies into ROGI bank account
- Makes payments from ROGI funds with appropriate authority
- Complies with Associations Incorporation Act
- Submits report, balance sheet or financial statement to the committee on a monthly basis
- Secures all accounting records of ROGI
- Reviews transactions online prior to all meetings
- Prepares and forwards financial statements and supporting documents to auditor before the Annual General Meeting

COMMITTEE MEMBERS (4)

The committee members will have Office Bearer positions and be an integral part of the decision-making process. The eight committee members (listed left and below) are expected to attend Management Committee meetings. Currently these are usually held two weeks after the ROGI monthly members' meeting.

POSITIONS VACANT: *You may nominate for any committee position (vacant or not) if you wish to be part of the decision-making process. All nominations must be lodged in writing on the appropriate form beforehand, with a proposer and a second and signed by the nominee.*

ROGI OFFICE BEARERS

Events Co-ordinator - Internal

- Sources and coordinates member workshops, garden visits and field trips

Events Co-ordinator - Public

- Organises public ROGI events (e.g. Green Heart Fair and Indigiscapes)

Membership Secretary

- Updates membership list bi-monthly; sends to committee
- Receives and processes new membership applications and renewals
- Sends a welcome letter to each new member
- Oversees sign-in and visitor's tables at monthly meetings
- Compiles list of visitors each month

Newsletter Editor

- Liaises with president, committee, and office bearers to publish their articles, upcoming events and other relevant articles/news
- Develops ideas and arranges for members/self to write articles
- Arranges for write-ups from events and speakers
- Edits for accuracy of spelling, grammar, sources and facts
- Sends the finished document to president/vice-president for review and distribution

ROGI OFFICE BEARERS *(continued)*

PR & Communications Co-ordinator/s

- Handles advertising and press releases
- Arranges maintenance of website, including Directory and Public Events
- Arranges maintenance of social media (Facebook, Instagram, TeamApp)

Library Co-ordinator/s

- Maintains records of books in stock and all loans
- Acquires new books as directed by the committee

AV Desk Operator/s

- Operates audio visual desk on meeting nights

Seed Bank Co-ordinator/s

- Purchases, saves or procures fresh quality seed for seed bank
- Maintains records of seed stock; rotates to maintain viability
- Sells seeds at ROGI meetings, garden visits and events
- Arranges for envelopes, labels and seed-packing days
- Ensures seed bank has seasonal stock

Plant Sales co-ordinator

- Sells plants at ROGI meetings that have been grown and donated by members
- Arranges for leftover plants to be looked after by members until the next meeting

Supper Co-ordinator

- Supplies consumables and keeps receipts for reimbursement by Treasurer
- Lays out supper provided by members
- Ensures kitchen is clean after meetings with help of volunteers
- Launders tea towels and tablecloths

Why be a Volunteer?

It's not for money, it's not for fame.
It's not for any personal gain.
It's just for love of fellowman.
It's just to lend a helping hand.
It's just to give a tithe of self.
That's something you can't buy with wealth.
It's not medals won with pride.
It's for that feeling deep inside.
It's that reward down in your heart.
It's that feeling that you've been a part.
Of helping others far and near,
that makes you be a Volunteer!

Author Unknown



Many thanks to our ROGI volunteers - you are all appreciated for the job you do for our gardening club. If you've never volunteered before, please give some thought to contributing to ROGI in some way.

Cleveland Property for Sale

The property details are:

- Located at 6 Erobin St Cleveland
- Quality 4 bedroom lowest brick house
- Concrete inground pool
- Property size 1012 sqm
- Established small orchard
- Established garden using organic principles.

This garden was showcased in the August 2019 ROGI newsletter.

[https://www.rogi.com.au/uploads/ROGINewsAugust2019%20\(2\).pdf](https://www.rogi.com.au/uploads/ROGINewsAugust2019%20(2).pdf)

The garden has some of the best red soil in the district. The property is located in one of the most sought after areas in the Redlands, with views through the park opposite to Stradbroke Island.

For more information and photos go to:

<https://www.realestate.com.au/property/6-erobin-st-cleveland-qld-4163/> Enquiries to Maurie Foley, phone: 0487 318 582



Upcoming Events



BETHANIA STREET COMMUNITY GARDEN

Bethania Street Lota

Growing Healthy Citrus Trees

Sunday 4th August 2024, 9:30am - 11.30am

This workshop is an in-depth look at growing citrus trees, including lemons, oranges, mandarins, limes (and others). You will learn how to select, plant and care for these popular fruiting trees. The community garden's variety of citrus trees allows the presenter to demonstrate fertilising, pruning and the identification, management and prevention of pests and diseases. Citrus grow well in our climate and, once established, can provide delicious fruit for decades.

Free - Bookings essential.

Email bethaniabooking@gmail.com including your name and phone number

Harvest Share

Wednesday 14th August 2024 (Ekka Holiday), 10.00 - 11.30am

Everyone is welcome to join us for our Harvest Share, focusing on gardening, home grown food and local produce. Bring your friends and neighbours to wander through our productive garden, talk to our friendly gardeners, meet new people, have a cuppa, listen to some local music and celebrate local food growing and community.

Are you a gardener or a foodie? Bring along any spare home grown produce or homemade food to share.

Gold coin donation - No booking required

ROGI MANAGEMENT COMMITTEE

| | | |
|-------------------|---|--|
| PRESIDENT | Terry Sullavan | president@rogi.com.au |
| VICE PRESIDENT | YOU??? | |
| SECRETARY | Patricia Stuart | secretary@rogi.com.au |
| TREASURER | Bernadette Reid | treasurer@rogi.com.au |
| COMMITTEE MEMBERS | Rhonda Binns, Toni Bowler, Romana Langdon, Ann Roffey | |

OFFICE BEARERS

| | | |
|---------------------|----------------------|--|
| MEMBERSHIP SEC'Y | Rhonda Binns | membership@rogi.com.au |
| NEWSLETTER EDITOR | Ann Roffey | newsletter@rogi.com.au |
| PR & COMMUNICATIONS | Gail Bruce | |
| CLUB EVENTS | Toni Bowler | tonibowler@hotmail.com |
| PUBLIC EVENTS | Terry Sullavan | publicevents@rogi.com.au |
| LIBRARY | Rose Faleafa | library@rogi.com.au |
| SEED BANK | Geoff & Cheryl Rynja | seeds@rogi.com.au |
| SEED SAVERS GROUP | Linda Brennan | linda@ecobotanica.com.au |
| TECH DESK | Bevan Saul | |
| WEBSITE | Pal Juvancz | pal@pcpals.com.au |

The views expressed in ROGI News and at ROGI meetings are those of the Editor and submitters and guest speakers, not necessarily those of Redland Organic Growers Inc.

Email: info@rogi.com.au **Webpage:** www.rogi.com.au
www.facebook.com/groups/redland.organic.growers

Other gardening groups using organic methods:

Brisbane Organic Growers Inc (BOGI)—
1st Thursday every month (except Jan),
Albion Peace Hall, 102 McDonald Rd, Windsor,
6.30 for 7.30pm. 3357 3171 <http://bogi.org.au>

Qld Herb Society—1st Tuesday every month,
Albion Peace Hall. 7.30pm. 54268299
<http://www.qldherbsociety.org.au/qhs>

Oaklands Street Community Garden—Wednesday
and Friday 9-noon, Sunday 2-5pm. Oaklands Street,
Alexandra Hills. 0408 259 445



New ROGI member Suzanne sent in this photo of her beautiful hot pink zygocactus.

Thank you Suzanne, and welcome to ROGI!

NEWSLETTER DEADLINE

We'd like to hear from you!

For example, send us:

- A story about your garden
- A photo of an interesting plant
- An article about an unusual plant
- A request for items or information
- Specific garden or nutrition information
- A recipe for home-grown produce
- A notice that you have something to give away or sell
- A handy technique or tip
- A gardening problem solved
- Anything to do with organic growing
- A review of a ROGI library book

Please send your items to the editor and help keep the ROGI Newsletter topical, interesting, local and relevant.

Email newsletter@rogi.com.au

The August newsletter deadline is 25 JULY 2024